

**WHAT'S ON LOCALLY - ACTIVITIES, HELP AND ADVICE AVAILABLE IN THE LEEK AREA- JANUARY 2026**

| TITLE  | ACTIVITY  | LOCATION   | DAY           | TIME              | Tel No.       | Contact/ Further information  |  |
|--|---|--|---------------|-------------------|---------------|---|--|
| <b>Social Prescribing:</b>                         | Your local Social Prescribing Team are here to offer advice, guidance and signposting   | Leek and District Foodbank at the rear of Gateway Church ST13 8AA                        | Friday        | 12.30pm to 2.30pm |               | Provides non medical support for people age 18+ Help and advice including mental health, housing, benefits, and education |  |
| <b>Activities with and for your child and baby</b> | Leek Breastfeeding Group - For breastfeeding support and playtime for baby  | HOME START, Staffs Moorlands Earl Street, Leek   | Daily         | 12.30pm to 2.30pm |               | <b>Information also on facebook See Homestart below</b>   |  |
|  | Blaze Trails'   | Staffordshire Baby and Toddler walking community   | (and UK wide) | On Facebook       |               | <b>Download the Mighty Networks App to access your local Blaze Trail Community</b>  |  |
|  | Parent and Toddler Swimming   | Staffs Moorlands Leisure Centres:- details on the website or by telephone:-              |               |                   |               |   |  |
|  |   | Biddulph Valley  |               |                   | 01782 515005  | <a href="http://www.leisurecentre.com">www.leisurecentre.com</a>  |  |
|  |   | South Moorlands  |               |                   | 01538 753883  | <a href="http://www.leisurecentre.com">www.leisurecentre.com</a>  |  |
|  | Free Baby Bounce & Rhyme (0-3years) and Storytelling (grandparents welcome)   | Leek Library   | Monday        | 11- 11.30am       | 01538 332061  | <a href="http://staffordshire.gov.uk/Libraries">staffordshire.gov.uk/Libraries</a>  |  |
|  |   | Leek library   | Monday        | 2-2.30pm          |               | <a href="#">Ditto</a>   |  |
|  |   | Leek library   | Thursdays     | 11-11.30am        |               | <a href="#">Ditto</a>   |  |
|  |   | Leek Library   | Friday        | 11-11.30am        |               | <a href="#">Ditto</a>   |  |
| <b>(New)</b>                                       | Nature Tales' - Nature themed stories, play and craft activities - suited to under 5s at  | Leek Library - 10am to 11am  |               |                   |               | <a href="http://www.staffs-wildlife.org.uk/events">www.staffs-wildlife.org.uk/events</a>                                  |  |
|  | Lego Club   | Leek Library   | Saturdays     | 10.30-12pm        |               | <a href="#">Ditto</a>   |  |
|  | Puzzle Afternoon -Age 3+  | Leek Library   | Saturday      | 12.30pm-2.30pm    |               | (age 3+ with a grown up - just drop in)   |  |
|  | Inside Out Forest School  | Further information on the website and facebook  |               |                   |               | <a href="http://www.insideoutforestschool.com">www.insideoutforestschool.com</a>  |  |
|  | Seedlings baby & toddler Gp   | St Luke's Church Centre  | Thursdays     | 10am-11.30am      | 01538 373306  | <a href="https://www.leekparish.org">https://www.leekparish.org</a><br><a href="#">also on facebook</a>                   |  |
|  | Children age 8-18 with a disability   | Caudwell Childrens Centre Newcastle Under Lyme   |               |                   | 0345 300 1348 | <a href="mailto:activities@caudwellchildren.com">activities@caudwellchildren.com</a>                                      |  |
|  | <b>School uniform Bank (all local schools)</b>  | Sold cheaply at St Paul's Church   | Thursdays     | 6pm -             |               |   |  |
| <b>(New)</b>                                       | <b>Home-Start Staffordshire Moorlands is a voluntary organisation providing free, confidential support for families in the Staffordshire Moorlands (For parents when they need us most)</b> |  |               |                   |               |   |  |
|  |   | School yard, Earl Street, Leek ST13 6JT  |               |                   | 01538 387231  | <a href="http://www.homestartsm.org.uk">www.homestartsm.org.uk</a>  |  |
|  |   |  |               |                   | 07511 860725  | <a href="mailto:info@homestart.org.uk">info@homestart.org.uk</a>  |  |
| <b>(New)</b>                                       | <b>Craft and Play - Free group for pre-school children - Home Start office - Earl St Leek - term time</b>   |  |               | Tues 10-11.30am   |               | <a href="mailto:sarah@homestart.org.uk">sarah@homestart.org.uk</a>  |  |
| <b>Age Concern UK:</b>                             | Staffordshire Age Uk  | Providing Information and Advice, Day Opportunities, Care & Help at Home and Befriending |               |                   |               |   |  |
|  |   | Information guides and factsheets on the website   |               |                   | 0800 678 1602 | <a href="http://www.ageuk.org.uk/staffordshire/our_services">www.ageuk.org.uk/staffordshire/our_services</a>              |  |
|  |   | IT Training Courses - find one in your area  |               |                   | 0800 678 1602 | <a href="http://ageuk.org.uk/services/in-your-area/it_training">ageuk.org.uk/services/in-your-area/it_training</a>        |  |
| <b>Art:</b>  | Art classes - life drawing  | Foxlowe Centre   | Tuesday       | 1pm - 4pm         | 01538 386112  | <a href="mailto:email_hello@foxloweartscentre.org.uk">email_hello@foxloweartscentre.org.uk</a>                            |  |
|  | Art classes - art group   | Foxlowe Centre   | Thursday      | 10am - 1pm        |               | <a href="http://www.foxloweartscentre.org.uk">http://www.foxloweartscentre.org.uk</a>                                     |  |
|  | Art Appreciation  | Watson Centre  | Tuesday       | 9.30-11.15pm      | 01538 382998  | <a href="https://leek.u3asite.uk/">https://leek.u3asite.uk/</a>   |  |
|  | Painting All Media  | Norton House   | Monday        | 12.15-3pm         | 01538 384030  | <a href="https://leek.u3asite.uk/">https://leek.u3asite.uk/</a>   |  |

MOORLAND MEDICAL CENTRE LEEK PATIENT PARTICIPATION GROUP

|   |  |  |                                    |                 |  |  |
|---|--|--|------------------------------------|-----------------|--|--|
|   | Painting Water Colour  | Norton House   | Weds                               | 2-4pm           | 01538 382971                               | <a href="https://leek.u3asite.uk/">https://leek.u3asite.uk/</a>  |
|   |  |  |                                    |                 |  |  |
| <b>Badminton</b>  | Badminton 1  | Cheadle Leisure Centre   | Wednesdays                         | 2.30-4.30pm     | 07814 532792                               | <a href="https://leek.u3asite.uk/">https://leek.u3asite.uk/</a>  |
|   | Badminton 2  | Cheadle Leisure Centre   | Tuesday                            | 2pm-4pm         | 07492 979313                               | <a href="https://leek.u3asite.uk/">https://leek.u3asite.uk/</a>  |
|   | Badminton 3  | Cheadle Leisure Centre   | Monday                             | 11-12pm         | 01538 371618                               | <a href="https://leek.u3asite.uk/">https://leek.u3asite.uk/</a>  |
|   | Badminton 4  | Cheadle Leisure Centre   | Thursdays                          | 1pm-2pm         | 01538 398358                               | <a href="https://leek.u3asite.uk/">https://leek.u3asite.uk/</a>  |
|   |  |  |                                    |                 |  |  |
| <b>Bereavement Support</b>                                  | Leek Bereavement Friendship Group  | John Hall Wellness Gardens,  | Every third Wednesday              | 10.30 - 12 noon | 01538 387111                               |  |
|   | Support for bereaved people aged 50+   | Fowlchurch Road, ST13 6BH  |                                    |                 |  |  |
|   |  |  |                                    |                 |  |  |
| <b>Bowls:</b>   | Bowls (2) - U3A  | Cheadle Leisure Centre   | Friday                             | 2.30pm-4.30pm   | 01538 371903                               | <a href="https://leek.u3asite.uk/">https://leek.u3asite.uk/</a>  |
|   | Petanque (a form of Boules)  | Pointon park Cheddleton  | Monday                             | 10am-12pm       | 01538 381242                               | <a href="https://leek.u3asite.uk/">https://leek.u3asite.uk/</a>  |
|   |  |  |                                    |                 |  |  |
| <b>Card and Board Games</b>                                 | Bridge - (1)   | Norton House   | Tuesdays                           | 11.30-1.30pm    | 01538 387390                               | <a href="https://leek.u3asite.uk/">https://leek.u3asite.uk</a>   |
|   | Bridge - (2)   | Watson Centre  | Thursdays                          | 1.45-4pm        | 01538 360629                               | <a href="https://leek.u3asite.uk/">https://leek.u3asite.uk</a>   |
|   | Canasta  | Norton House   | Tuesdays                           | 4.30-6.30pm     | 01538 528972                               | <a href="https://leek.u3asite.uk/">https://leek.u3asite.uk</a>   |
|   | Chess  | Norton House, Fynney St.   | Tuesdays                           | 2-4pm           | 01538 385927                               | <a href="https://leek.u3asite.uk/">https://leek.u3asite.uk</a>   |
|   | Cribbage   | Norton House, Fynney St.   | Weds                               | 2pm-4.30pm      | 01538 300415                               | <a href="https://leek.u3asite.uk/">https://leek.u3asite.uk</a>   |
|   | Mah Jong 1   | Watson Centre  | Friday                             | 10am-1pm        | 01538 381488                               | <a href="https://leek.u3asite.uk/">https://leek.u3asite.uk</a>   |
|   | Mah Jong 2   | Watson Centre  | Thursdays                          | 4.15-6.15pm     | 07973 416194                               | <a href="https://leek.u3asite.uk/">https://leek.u3asite.uk</a>   |
|   | Scrabble - U3A   | Watson Centre, 17 Southbank St.  | Monday                             | 1.30-3.30pm     | 01538 529656                               | <a href="https://leek.u3asite.uk/">https://leek.u3asite.uk</a>   |
|   |  |  |                                    |                 |  |  |
|   |  |  |                                    |                 |  |  |
| <b>Carers (Do you look after a family member or friend)</b> | North Staffs Carers (NSC) Association  | Carers Centre, 234 Victoria Road, Fenton, Stoke on Trent ST4 2 LW  |                                    |                 |  |  |
|   | (includes Young Carers)  | Free Carers Support and Advice and a range of activities   |                                    |                 | 01782 793100                               | <a href="http://www.carersfirst.com">www.carersfirst.com</a>   |
|   | Staffordshire Together for Carers  | <a href="http://www.n-compass.org.uk/our-services/carers/staffordshire-together-for-carers-service">www.n-compass.org.uk/our-services/carers/staffordshire-together-for-carers-service</a> |                                    |                 |  | <a href="mailto:optin@carersfirst.com">optin@carersfirst.com</a>   |
|   | <b>For a copy of the monthly What's on for Carers, email <a href="mailto:optin@carersfirst.com">optin@carersfirst.com</a>.</b> | <b>Copy of Whats on for January 2026 is attached</b>   |                                    |                 |  | <a href="tel:01782793100">Tel: 01782 793100</a>  |
|   |  |  |                                    |                 |  |  |
| <b>Choirs</b>   | (See singing below)  |  |                                    |                 |  |  |
| <b>Community Cafes:-</b>                                    | Haregate Community Café  | Haregate Community Centre  | Tuesday & Friday                   | 9am-1pm         | 01538 398378                               | <a href="http://www.haregate.co.uk">www.haregate.co.uk</a>   |
|   | Ipstones prayer café - St Leonard's church - service & refreshments & chat   |  | Friday                             | 10-11am         | 01538 266331                               | also on facebook   |
|   | Leek Baptist Church - free coffee  | 5 Rosebank Terrace, leek   | 1st Fri of the month               | 11am - 1pm      | 01538 421278                               | also on facebook   |
|   | Salvation Army Coffee Morning - drink & biscuit 80p per cup & £1 per mug   |  | Wednesday                          | 10am-12pm       | 01538 384211                               | <a href="http://www.salvationarmy.org.uk">www.salvationarmy.org.uk</a>   |
|   | Salvation Army Lunch Club  | Salisbury Street   | Friday                             | 12noon          | 01538 384211                               | <a href="http://www.salvationarmy.org.uk">www.salvationarmy.org.uk</a>   |
|   | Salvation Army Lunch Club Delivery   | Delivered to your door each Friday lunchtime (£5)  |                                    | Phone to book   | 01538 384211                               | <a href="http://www.salvationarmy.org.uk">www.salvationarmy.org.uk</a>   |
|   | St Paul's Thursday Lunch Club -  | Novi Lane, Leek  | Thursdays                          | 11.45-2pm       | 07817 358503                               | also on facebook   |
|   | Trinity Church Cafe  | Derby Street - see website for events -  |                                    |                 | <a href="tel:01538398483">01538 398483</a> | <a href="http://www.trinitychurchleekurc.org.uk">www.trinitychurchleekurc.org.uk</a>                                 |
|   | MHA Communities North Staffs -Befriending, Lunch and Social Groups   |  | Telephone or look on the website:- |                 | 01782 816662                               | <a href="http://www.mha.org/communities/near-me/north-staffords">www.mha.org/communities/near-me/north-staffords</a> |
|   | Foxlowe Arts Centre Café   | Monday to Saturday and first Sunday of the month   |                                    | 10am - 4pm      |  | <a href="http://www.foxloweartscentre.org.uk">www.foxloweartscentre.org.uk</a>                                       |

MOORLAND MEDICAL CENTRE LEEK PATIENT PARTICIPATION GROUP

|                             |  |  |                            |                 |                                       |  |
|-----------------------------|--|--|----------------------------|-----------------|---------------------------------------|--|
|                             |  |  |                            |                 | Facebook                              | <a href="#">Foxlowe Arts Centre</a>  |
| <b>Computing :</b>          |  |  |                            |                 |                                       |  |
|                             | Age UK Advice Line can help you to find a computer training course in your area  |  |                            |                 | 0800 678 1602                         | <a href="http://ageuk.org.uk/services/in-your-area/it-training">ageuk.org.uk/services/in-your-area/it-training</a> |
|                             | Staffordshire Moorlands Work Club - Free advice and support on searching the internet for employment opportunities.                  |  |                            |                 |                                       |  |
|                             |  | Haregate Community Centre  | Wednesday                  | 10am-12pm       | Employment Officer Tel: 01538 381 356 |  |
|                             | Leek U3A - Norton House - drop in IT sessions presently for U3A members with plans for future formal sessions. (more info to follow) |  |                            |                 |                                       | <a href="mailto:U3amemsecleek@gmail.com">U3amemsecleek@gmail.com</a>   |
|                             | Ravenshead (Nottinghamshire) U3a Computer Guides - describing a range of basic computing techniques                                  |  |                            |                 |                                       | <a href="https://u3asites.org.uk/ravenshead/page/43601">https://u3asites.org.uk/ravenshead/page/43601</a>          |
| <b>Crafts:</b>              |  |  |                            |                 |                                       |  |
|                             | Needlecraft  | Watson Centre, 17 Southbank St.  | Wednesday                  | 9.15-11.15am    | 01538 371103                          | <a href="https://leek.u3asite.uk/">https://leek.u3asite.uk/</a>  |
|                             | Card making  | Norton House, Fynney St.   | Friday                     | 10am-12pm       | 01782 303272                          | <a href="https://leek.u3asite.uk/">https://leek.u3asite.uk/</a>  |
|                             | Cross Stitch Plus  | Norton House, Fynney St.   | Thursdays                  | 2pm -4pm        | 01538 385096                          | <a href="https://leek.u3asite.uk/">https://leek.u3asite.uk/</a>  |
|                             | Craft Workshop   | Cabbage Rose' 1 Stockwell St, Leek                                       | held at Foxlowe Art Centre |                 | 01538 529522                          | <a href="mailto:info@cabbagerose.co.uk">info@cabbagerose.co.uk</a>   |
|                             | Leek Floral Art Society  | St Edwards School, Westwood Road   | 2nd Weds of the month      | 7.30pm - 9,30pm |                                       | <a href="http://nafascheshire.org.uk/flower-clubs/leek.htm">nafascheshire.org.uk/flower-clubs/leek.htm</a>         |
|                             | Flower arranging   | Watson Centre, 17 Southbank St.  | Wednesday                  | 2pm-4pm         | 07528 381047                          | <a href="https://leek.u3asite.uk/">https://leek.u3asite.uk/</a>  |
|                             | Informal flower Club   | Rudyard methodist Chapel   | 1st Tues of the month      | 7.30pm-9.30pm   |                                       | <a href="https://leek.u3asite.uk/">https://leek.u3asite.uk/</a>  |
|                             | Handicrafts (variety of handicrafts)   | Norton House   | Friday                     | 11.15-12.45pm   | 01538 360462                          | <a href="https://leek.u3asite.uk/">https://leek.u3asite.uk/</a>  |
|                             | Knit and Natter  | Leek Library   | Tuesdays                   | 1.30-3pm        | 01538 332061                          | <a href="http://www.staffordshire.gov.uk/libraries">www.staffordshire.gov.uk/libraries</a>                         |
|                             | Mixed Crafts (inc group projects)  | Norton House   | Thursdays                  | 1.30-3.30pm     | 01782 537864                          | <a href="https://leek.u3asite.uk/">https://leek.u3asite.uk/</a>  |
|                             | Patchwork & quilting (1)   | Norton House, Fynney St.   | Tuesdays                   | 1.45pm-3.45pm   | 01538 266555                          | <a href="https://leek.u3asite.uk/">https://leek.u3asite.uk/</a>  |
|                             | Happy Crafters   | Norton House, Fynney Street  | Monday                     | 2pm - 4pm       | 01782 537864                          | <a href="https://leek.u3asite.uk/">https://leek.u3asite.uk/</a>  |
|                             | Railway Modelling Enthusiasts  | Watson Centre, 17 Southbank St.  | Tuesdays                   | 2pm-4pm         | 07435 563479                          | <a href="https://leek.u3asite.uk/">https://leek.u3asite.uk/</a>  |
|                             | Leek & District Guild of Spinners, Weavers and Dyers - Bradnop Village Hall- 2nd Sat of month  |  |                            |                 |                                       | <a href="http://www.wsd.org.uk&gt;guilds/leek-district/">www.wsd.org.uk&gt;guilds/leek-district/</a>               |
| <b>Creative</b>             | Creative Writing   | Norton House, Fynney St.   | Weds                       | 9.15-11.15am    | 01538 387344                          | <a href="https://leek.u3asite.uk/">https://leek.u3asite.uk/</a>  |
| <b>Writing:</b>             | Writing Group  | Foxlowe Arts Centre  | Weekly                     | Phone           | 01538 386112                          | <a href="mailto:email_hello@foxloweartscentre.org.uk">email_hello@foxloweartscentre.org.uk</a>                     |
| <b>Cycling:</b>             | Peak district Mountain Bike Club   |  |                            |                 | email:                                | <a href="mailto:info@peakdistrictmtb.org">info@peakdistrictmtb.org</a>   |
| <b>Dancing:</b>             | Chance to Dance  | St Paul's Church Hall, Novi Lane   | Tuesdays                   | 2-4pm           | 01538 372543                          | <a href="https://leek.u3asite.uk/">https://leek.u3asite.uk/</a>  |
|                             | Line Dance 3 (Beginners)   | St Paul's Church Hall, Novi Lane   | Tuesdays                   | 10.45-12.15pm   | 07531 675071                          | <a href="https://leek.u3asite.uk/">https://leek.u3asite.uk/</a>  |
|                             | Line Dance 4   | St Paul's Church Hall, Novi Lane   | Monday                     | 10am-11.30am    | 01538 399618                          | <a href="https://leek.u3asite.uk/">https://leek.u3asite.uk/</a>  |
| <b>New</b>                  | Leek Morris Dancers  | Westwood Road First School   | Friday                     | From 7.15pm     |                                       |  |
| <b>New</b>                  | Dun and Dance  | Watson Centre  | Tuesdays                   | 5.30-6.30pm     |                                       | <a href="https://leek.u3asite.uk/">https://leek.u3asite.uk/</a>  |
| <b>Disability Solutions</b> | Support , Information and Advice Service   | North Staffordshire Medical Institute, Hartshill Road, Hartshill ST4 7NY |                            |                 | 01782 638 300                         | <a href="http://www.disabilitysolutions.org.uk">www.disabilitysolutions.org.uk</a>                                 |
| <b>West Midlands</b>        |  |  |                            |                 | Email:                                | <a href="mailto:general@disability-solutions.net">general@disability-solutions.net</a>                             |
|                             |  |  |                            |                 | Facebook:                             | <a href="#">Disability Solutions West Midlands</a>   |
|                             | DSWM Macmillan Team  | Macmillan Cancer - access to Welfare Benefits -                          |                            |                 | 01782 667 321                         |  |
|                             | Volunteering Opportunities   | To help the charity and people with disabilities in the surrounding area |                            |                 | 01782 667 336                         |  |
|                             | Disability Awareness/Equality Training   | Looks at linking people with their local community services              |                            |                 | 01782 667 327                         |  |

MOORLAND MEDICAL CENTRE LEEK PATIENT PARTICIPATION GROUP

|                        |   |   |                        |                  |   |   |  |
|------------------------|---|---|------------------------|------------------|---|---|--|
|                        | S-O-T Welfare Benefits Team:  | Telephone advice service for everyday living issues                             |                        |                  | 01782 667 333                               |   |  |
|                        | Disability Connect:   | One-to-one support to access activities to improve quality of life              |                        |                  | 01782 667 323                               |   |  |
|                        | General:  |   |                        |                  | 01782 667 324                               |   |  |
|                        |   |   |                        |                  |   |   |  |
| <b>Entertainment:</b>  | Leek Comedy Club  | Foxlowe Arts Centre   | 1st Thurs in the month |                  | 01538 386112                                | <a href="#">(tickets on door or on line)</a>  |  |
|                        | Film Night  | Foxlowe Arts Centre   | Every Tuesday night    | Doors from 7pm   | 01538 386112                                | <a href="mailto:hello@foxloweartscentre.org.uk">email hello@foxloweartscentre.org.uk</a>                |  |
|                        |   |   |                        | facebook and     | website                                     | <a href="http://www.foxloweartscentre.org.uk">www.foxloweartscentre.org.uk</a>                          |  |
|                        |   |   |                        |                  |   |   |  |
| <b>Employment</b>      | Staffordshire Moorlands Work Club - Free advice and support on searching the internet for employment opportunities. |   |                        |                  |   |   |  |
|                        |   | Haregate Community Centre   | Wednesday              | 10am-12pm        | Employment Officer Tel: 01538 381 356       |   |  |
|                        |   |   |                        |                  |   |   |  |
| <b>Family History:</b> | Family History 1  | Norton House  | Weds                   | 9.30-11.15am     | 01782 535348                                | <a href="https://leek.u3asite.uk/">https://leek.u3asite.uk/</a>   |  |
| <b>New</b>             | Family History 2  | Watson Centre   | Tuesdays               | 11.30-1pm        | 01782 535348                                | <a href="https://leek.u3asite.uk/">https://leek.u3asite.uk/</a>   |  |
|                        | Family History Group  | Leek Library  | Friday                 | 1pm onwards      | 01538 332061                                | <a href="http://staffordshire.gov.uk/libraries">staffordshire.gov.uk/libraries</a>                      |  |
|                        |   |   |                        |                  |   |   |  |
| <b>Fitness and</b>     | Chair Yoga  | Watson Centre   | Mondays                | 3.30pm-4.30pm    | 07753 240815                                | <a href="https://leek.u3asite.uk/">https://leek.u3asite.uk/</a>   |  |
| <b>Easy Exercise:</b>  | Everyone Health - Move More Feel Good   | Haregate Community Centre   | Thursday               | 9am-1pm          | <a href="tel:03330050095">0333 005 0095</a> | <a href="http://staffordshire.everyonehealth.co.uk">staffordshire.everyonehealth.co.uk</a>              |  |
|                        | Yoga  | Swythamley & Heaton Community Centre Enquiries by email to JulieFairy50@gmail   |                        |                  |   |   | <a href="http://www.yogastation.net">www.yogastation.net</a>             |
|                        | Yoga Beginners 1  | Watson Centre   | Mondays                | 4pm              | 07753 240815                                | <a href="https://leek.u3asite.uk/">https://leek.u3asite.uk/</a>   |  |
|                        | Yoga Beginners 2  | Watson Centre   | Mondays                | 5pm              | 07753 240815                                | <a href="https://leek.u3asite.uk/">https://leek.u3asite.uk/</a>   |  |
|                        | Pilates with Kate   | Swythamley & Heaton Community Centre Enquiries to pilateswithkate@hotmail.co.uk |                        |                  |   |   | <a href="http://www.pilateswithkate.co.uk">www.pilateswithkate.co.uk</a> |
|                        |   |   |                        |                  |   |   |  |
| <b>Foodbank</b>        | Leek and District Foodbank  | Rear of The Gateway Church Leek   | Tuesday and Friday     | Lindsey Stockton |   |   |  |
| <b>New</b>             |   | West Street, Leek ST13 8aa  | (Collection of food    | (Project Leader  | <a href="tel:01538373289">01538 373289</a>  | <a href="mailto:info@leekdistrict.foodbank.org.uk">info@leekdistrict.foodbank.org.uk</a>                |  |
|                        |   |   | parcels)               |                  | <a href="tel:7916005064">7916005064</a>     |   |  |
|                        |   |   |                        |                  |   |   |  |
| <b>Further</b>         | <b>Stoke on Trent College</b>   | Enrol on-line or call in. Information on the website                            |                        |                  | 01782 208208                                | <a href="http://www.stokecollege.ac.uk">www.stokecollege.ac.uk</a>                                      |  |
| <b>Education</b>       |   | Burslem Campus, Moorland Road, Burslem, ST6 1JJ                                 |                        |                  |   |   |  |
| <b>and</b>             |   | Cauldon Campus, Stoke Road, Shelton, ST4 2DG                                    |                        |                  |   |   |  |
| <b>Training</b>        | <b>Buxton &amp; Leek College Campuses</b>   | Devonshire Road Buxton SK17 6RY   |                        |                  | 0800 074 0099                               | <a href="mailto:enquiries@blc.ac.uk">enquiries@blc.ac.uk</a>  |  |
|                        |   | Stockwell Street Leek ST13 6DP  |                        |                  |   |   |  |
|                        | <b>Macclesfield College</b>   | Information on the website  |                        |                  | 01625 410000                                | <a href="http://www.macclesfield.ac.uk">www.macclesfield.ac.uk</a>                                      |  |
| <b>Gardening:</b>      |   |   |                        |                  |   |   |  |
|                        | Gardening   | Norton House, Fynney St.  | Mon                    | 9.30-10.45am     | <a href="tel:01538388015">01538 388015</a>  | <a href="https://leek.u3asite.uk/">https://leek.u3asite.uk/</a>   |  |
|                        | Grow it, Eat it!  | Haregate Community Centre   | 3rd Thursday in month  | 9.30-11.30pm     | 01538 381265                                | <a href="http://www.haregate.co.uk/centre-whats-on">www.haregate.co.uk/centre-whats-on</a>              |  |
|                        |   |   |                        |                  |   |   |  |
| <b>History</b>         | History Topics  | Norton House, Fynney Street   | Weds                   | 11.30-1pm        | 07971 059689                                | <a href="https://leek.u3asite.uk/">https://leek.u3asite.uk/</a>   |  |
|                        | Swythamley Historical Society   | Swythamley & Heaton Community Centre and for more information go to:-           |                        |                  |   | <a href="https://facebook.com/swythamleyhistoricalsociety">facebook.com/swythamleyhistoricalsociety</a> |  |
|                        |   |   |                        |                  |   |   |  |
| <b>Learn a</b>         | French Intermediate   | Norton House, Fynney St.  | Tuesdays               | 9.30-11am        | 01782 535234                                | <a href="https://leek.u3asite.uk/">https://leek.u3asite.uk/</a>   |  |
| <b>Language</b>        | French Beginners  | Norton House, Fynney St.  | Tuesdays               | 11.15-12.15      | 01782 535234                                | <a href="https://leek.u3asite.uk/">https://leek.u3asite.uk/</a>   |  |
|                        | German  | Norton House, Fynney St.  | Tuesdays               | 9.30-11am        | 01538 387812                                | <a href="https://leek.u3asite.uk/">https://leek.u3asite.uk/</a>   |  |

MOORLAND MEDICAL CENTRE LEEK PATIENT PARTICIPATION GROUP

|                           |   |  |   |                |              |  |
|---------------------------|---|--|---|----------------|--------------|--|
|                           | Italian   | Norton House, Fynney St.   | Thursdays   | 11.15-12.45pm  | 01782 544448 | <a href="https://leek.u3asite.uk/">https://leek.u3asite.uk/</a>  |
| <b>New</b>                | Latin   | Norton House, Fynney St.   | Tuesday   | 9.30-11am      |              | <a href="https://leek.u3asite.uk/">https://leek.u3asite.uk/</a>  |
|                           | Spanish (2)   | Norton House, Fynney St.   | Weds  | 11.30-1pm      | 01538 381488 | <a href="https://leek.u3asite.uk/">https://leek.u3asite.uk/</a>  |
| <b>New</b>                | Spanish Intermediate  | Norton House, Fynney St.   | Tuesdays  | 11.30-1.30pm   | 01782 544448 | <a href="https://leek.u3asite.uk/">https://leek.u3asite.uk/</a>  |
|                           | Spanish (1)   | Norton House, Fynney St.   | Thursdays   | 9.30-11am      | 01782 545867 | <a href="https://leek.u3asite.uk/">https://leek.u3asite.uk/</a>  |
|                           |   |  |   |                |              |  |
| <b>Men's Sheds:</b>       | Gateway SHED<br>(For Men & women of all abilities)  | Foxlowe Arts Centre, Leek  | Tuesday & Saturday<br>(opening more days being considered.) | From 10am      | 01538 386112 | <a href="mailto:hello@foxloweartscentre.org.uk">email hello@foxloweartscentre.org.uk</a>   |
| <b>Mental Health</b>      | Changes' - Mental Health Support  | Well being service in Nth Staffs & the Moorlands   |   |                |              | <a href="mailto:northstaffs@changes.org.uk">northstaffs@changes.org.uk</a>   |
| <b>Advice and Support</b> | Rethink Mental Illness - North Staffs MH Social Inclusion and Recovery service (Moorlands)                  |  |   |                | 01538 387111 | <a href="http://www.rethink.org">www.rethink.org</a><br><a href="http://www.facebook.com/RethinkCharity">www.facebook.com/RethinkCharity</a> |
|                           | Moorlands Repair Café   | Saturdays 10am to 2pm  |   |                |              |  |
| <b>New</b>                | John Hall Community Garden  | A range of activities and crafts   | <b>Opening as usual on 5th January, 2026</b>                |                |              |  |
| <b>New</b>                |   | Next Walking Group on 23rd January at 10am - Walk of approx 5miles (Hillswood circular Leek) |   |                |              |  |
| <b>New</b>                |   | Spring Craft Fair - 21st March 2026 10am to 4pm - <b>Stall Holders wanted</b>                |   |                |              |  |
|                           | Ball Haye Cottage, Fowlchurch Road, Leek ST13 6AT - (Tai Chi is a 6 week pre-booked course)                 |  |   |                | 01538 387111 | <a href="mailto:johnhall@rethink.org">johnhall@rethink.org</a>   |
|                           | MHA Communities North Staffs -Befriending, Lunch and Social Groups  |  | Telephone or look on the website:-                          |                | 01782 816662 | <a href="http://www.mha.org/communities/near-me/north-staffords">www.mha.org/communities/near-me/north-staffords</a>                         |
|                           |   |  |   |                |              |  |
| <b>Modelling:</b>         | Railway modelling   | Watson Centre, 17 Southbank St.  | Tuesdays  | 2pm-4pm        | 07435 563479 | <a href="https://leek.u3asite.uk/">https://leek.u3asite.uk/</a>  |
|                           |   |  |   |                |              |  |
| <b>Music:-</b>            | African Drumming  | Watson Centre, 17 Southbank St.  | Tuesdays  | 4.15-5.30pm    | 07933 791610 | <a href="https://leek.u3asite.uk/">https://leek.u3asite.uk/</a>  |
| <b>Learning</b>           | Folk Ensemble   | Watson Centre, 17 Southbank St.  | Friday  | 3.15-5.15pm    | 07712 339801 | <a href="https://leek.u3asite.uk/">https://leek.u3asite.uk/</a>  |
| <b>&amp; Playing</b>      | Guitar (U3A)  | Watson Centre, 17 Southbank St.  | Thursdays   | 9.30am to 11am | 07973 416194 | <a href="https://leek.u3asite.uk/">https://leek.u3asite.uk/</a>  |
|                           | Jazzy Folk  | Watson Centre, 17 Southbank St.  | Thursdays   | 7pm -8.30pm    | 07817 244576 | <a href="https://leek.u3asite.uk/">https://leek.u3asite.uk/</a>  |
|                           | Ukulele/Banjo 2   | Norton House   | Tuesdays  | 7-8.30pm       | 01538 383915 | <a href="https://leek.u3asite.uk/">https://leek.u3asite.uk/</a>  |
| <b>New</b>                | Traditional Music of the British Isles  | Watson Centre, 17 Southbank St.  | Wednesdays  | 11.30-1.30pm   |              | <a href="https://leek.u3asite.uk/">https://leek.u3asite.uk/</a>  |
|                           | Guitar Beginners  | Watson Centre, 17 Southbank St.  | Thursdays   | 7.45-9.00am    |              | <a href="https://leek.u3asite.uk/">https://leek.u3asite.uk/</a>  |
|                           |   |  |   |                |              |  |
| <b>Philosophy</b>         | Everyday philosophical issues   | Norton House   | Thursday  | 11.30-1.15pm   | 07590 832148 | <a href="https://leek.u3asite.uk/">https://leek.u3asite.uk/</a>  |
| <b>&amp; Discussions</b>  | Political & Economic Discussion group   | Norton House   | Mondays   | 11.15-12.45pm  |              | <a href="https://leek.u3asite.uk/">https://leek.u3asite.uk/</a>  |
| <b>Photography</b>        | Digital Photography   | Daist Haye   | Monday  | 10am-12pm      | 07983 468230 | <a href="https://leek.u3asite.uk/">https://leek.u3asite.uk/</a>  |
|                           |   |  |   |                |              |  |
| <b>Pickleball:</b>        | Pickleball 1  | Biddulph Leisure Centre  | Wednesdays  | 2pm-4pm        | 07752 271342 | <a href="https://leek.u3asite.uk/">https://leek.u3asite.uk/</a>  |
|                           | Pickleball 2  | Cheadle Leisure Centre   | Fridays   | 12pm-2pm       | 07704 499512 | <a href="https://leek.u3asite.uk/">https://leek.u3asite.uk/</a>  |
|                           |   |  |   |                |              |  |
| <b>Reading:</b>           | Reading For Pleasure  | Norton House, Fynney St.   | Friday  | 1.45pm-3.45pm  | 07932 721765 | <a href="https://leek.u3asite.uk/">https://leek.u3asite.uk/</a>  |
|                           | Reading Group   | Leek library   | For more details: Phone:                                    |                | 01538 332061 | <a href="mailto:leek.library@staffordshire.gov.uk">leek.library@staffordshire.gov.uk</a>   |
|                           |   |  |   |                |              |  |
| <b>Repair Cafes</b>       | Volunteers needed as repairers, front of house or admin at the Foxlowe Arts Centre and the Haregate Centre. |  |   |                | Visit        | <a href="http://www.facebook.com/groups/moorlandsrepaircafe">www.facebook.com/groups/moorlandsrepaircafe</a>                                 |

MOORLAND MEDICAL CENTRE LEEK PATIENT PARTICIPATION GROUP

|                           |  |   |                                 |                 |  |   |  |
|---------------------------|--|---|---------------------------------|-----------------|--|---|--|
|                           |  |   |                                 |                 | Email:                                     | <a href="mailto:Repaircafe@moorlandsclimateaction.org.uk">Repaircafe@moorlands climateaction.org.uk</a>                   |  |
| <b>Running:</b>           | Running up to 5k   | Brough Park Running Club                          | Saturday                        | From 9am        |  | <a href="http://www.broughparkrunningclub.co.uk">www.broughparkrunning club.co.uk</a><br><a href="#">Also on facebook</a> |  |
| <b>Singing and Choirs</b> | Singing For Fun 2  | St Paul's Church Hall                             | Monday                          | 12.30-1.45pm    | 01538 372543                               | <a href="https://leek.u3asite.uk">https://leek.u3asite.uk</a>   |  |
|                           | Singing For Fun  | Norton House                                      | Monday                          | 11.30am to 1pm  | 01538 372543                               | <a href="https://leek.u3asite.uk">https://leek.u3asite.uk</a>   |  |
|                           | u3a Singers  | Salvation Army Hall                               | Tuesday                         | 1pm - 3pm       | 07481 841155                               | <a href="https://leek.u3asite.uk">https://leek.u3asite.uk</a>   |  |
|                           | Phoenix Singers - Leek   | The Grove, Mount Road, ST13 5BU                   | For further information phone:- |                 | 01782 503343                               | <a href="http://www.phoenixsingersleek.co.uk">www.phoenixsingersleek.co.uk</a> & facebook                                 |  |
|                           | Danebridge Choir   | Swythamley & Heaton Community Centre - Wednesdays |                                 | Tel: Judy Weeks | 01260 227683                               |   |  |
|                           | Wetley Rocks Male Voice Choir  | Wetley Rocks Methodist Church                     | Monday 7.30pm - 9pm             | Ian Jones       | 07557 944647                               | <a href="mailto:ij0511@uyahoo.com">ij0511@uyahoo.com</a>  |  |
| <b>Snooker</b>            | Leek Golf Club   | <i>new</i>  | Wednesdays                      | 10.00-12.00     |  | <a href="https://leek.u3asite.uk">https://leek.u3asite.uk</a>   |  |
| <b>Sport:</b>             | <i>A list of Sports Clubs is at the end of this document.</i>  |   |                                 |                 |  |   |  |
| <b>Table tennis</b>       | Beginners & experienced players  | St Edward's School                                | Monday                          | 7pm-8.30pm      | 07541 682718                               | <a href="https://leeku3asite.uk">https://leeku3asite.uk</a>   |  |
| <b>Tai Chi</b>            | Tai Chi 1  | St Paul's Church Hall                             | Thursday                        | 9.30-10.30am    | 07724 079740                               | <a href="https://leeku3asite.uk/">https://leeku3asite.uk/</a>   |  |
|                           | Tai Chi 2  | St Paul's Church Hall                             | Thursday                        | 12-1pm          | 01782 937656                               | <a href="https://leeku3asite.uk/">https://leeku3asite.uk/</a>   |  |
|                           | Tai Chi 3  | St Paul's Church Hall                             | Thursday                        | 10.45-11.45am   | 01538 360367                               | <a href="https://leeku3asite.uk/">https://leeku3asite.uk/</a>   |  |
|                           | Tai Chi 5  | Watson Centre                                     | Monday                          | 10.15-11.30am   | 01782 550607                               | <a href="https://leeku3asite.uk/">https://leeku3asite.uk/</a>   |  |
|                           | Tai Chi 6  | Watson Centre                                     | Monday                          | 11.40-12.45pm   | 01782 550607                               | <a href="https://leeku3asite.uk/">https://leeku3asite.uk/</a>   |  |
|                           | Tai Chi Movement   | Watson Centre                                     | Fridays                         | 1.45-2.45pm     | 07463 967646                               | <a href="https://leeku3asite.uk/">https://leeku3asite.uk/</a>   |  |
| <b>Transport:</b>         | Moorlands Voluntary Community Transport - Help for people who have no private transport & can't use public transport   |   |                                 |                 |  | <a href="https://mvct.co.uk/">https://mvct.co.uk/</a>   |  |
|                           |  |   |                                 | Telephone       | 01538 386888                               |   |  |
| <b>Volunteering</b>       | Moorlands Home Link - supporting older people in Leek to prevent social isolation and loneliness. The Leek group travels to Leek Town Football Club on Fridays by accessible minibus and enjoys a varied programme of activities together with a two course lunch. |   |                                 |                 |  | 01538 750511  | <a href="mailto:office@moorlandshomelink.co.uk">office@moorlandshomelink.co.uk</a> |
| <b>New</b>                | Leek Mind Shop - volunteer in the shop   | 38 Derby Street                                   | Daily                           |                 | 01538 371304                               |   |  |
| <b>Walking:</b>           | Walking Group  | Brough Park start (5-8miles or so)                | Thursdays                       |                 | 07780 790032                               | <a href="mailto:leek3awalking@btinternet.com">leek3awalking@btinternet.com</a>  |  |
|                           | Walking Group  | Brough Park start (8-12 miles)                    | Thursdays                       |                 | 07780 790032                               | <a href="mailto:leek3awalking@btinternet.com">leek3awalking@btinternet.com</a>  |  |
|                           | Strollers - fortnightly  | Brough Park start (3 -4 miles or so)              | Weds                            |                 | 07780 790032                               | <a href="mailto:leek3awalking@btinternet.com">leek3awalking@btinternet.com</a>  |  |
|                           | Ramblers Association - Wellbeing walks - Find a walk near you  |   |                                 |                 |  | <a href="http://beta.ramblers.org.uk/go-walking/wellbeing-walks">beta.ramblers.org.uk/go-walking/wellbeing-walks</a>      |  |
| <b>Walking netball</b>    | Slower version at a walking pace   | Cheadle Leisure Centre                            | Tuesdays                        | 2-3pm           | <a href="tel:07866660729">07866 660729</a> | <a href="http://www.u3asites.org.uk/leek">www.u3asites.org.uk/leek</a>  |  |
| <b>The W.I.:</b>          | Active Womens' Institutes locally with range of age groups - find a Womens Institute near you  |   |                                 |                 |  |   | <a href="https://www.thewi.org.uk">https://www.thewi.org.uk</a>                    |
|                           | Woodcroft WI   | St Lukes's Church                                 | 2nd Tues of the month           | 7.30pm          |  | <a href="tel:01538373306">Contact St Luke's Church on 01538 373306</a>  |  |
|                           | St Luke's Mothers Union  | St Luke's Church                                  | 3rd Tues of the month           | 7.30pm          |  | <a href="tel:01538372073">Contact Val on 01538 372073</a>   |  |

MOORLAND MEDICAL CENTRE LEEK PATIENT PARTICIPATION GROUP

|                             |   |  |  |               |  |  |  |
|-----------------------------|---|--|--|---------------|--|--|--|
| <b>Wellbeing and Health</b> | Friendship Group/Leek stroke Club   | Haregate Community Centre  | Mondays  | 9.30am-1.00pm | 01538 422829                               |  |  |
|                             | Community Cupboard - seasonal fruit & veg   | Haregate Community Centre  | Tuesdays and Fridays   | 11am -5pm     | <a href="tel:01538422829">01538 422829</a> | <a href="http://www.haregate.co.uk/centre-whats-on">www.haregate.co.uk/centre-whats-on</a> |  |
|                             | Samudra Meditation Classes  | Haregate Community Centre  | Wednesday  | 7.30pm-9pm    | <a href="tel:01538422829">01538 422829</a> | <a href="http://www.haregate.co.uk/centre-whats-on">www.haregate.co.uk/centre-whats-on</a> |  |
|                             | John Hall Wellbeing Community Garden  | offering a range of activities including gardening groups, maintenance groups, craft sessions, wellbeing courses & education workshops |  |               |  |  |  |
|                             | Ball Hays Cottage, Fowlchurch Road, Leek ST13 6AT                                       |  |  |               | 01538 387111                               | <a href="mailto:johnhall@rethink.org">johnhall@rethink.org</a>                             |  |
| <b>(New)</b>                | Wellbeing in the Community  | Dougie Mac community support   | Fortnightly at Leek Fire Station   |               |  | <a href="mailto:wellbeingcentre@dmhospice.org.uk">wellbeingcentre@dmhospice.org.uk</a>     |  |
| <b>Sports Clubs:</b>        | Ashcombe Park Cricket Club  |  | ashcombepark.play-cricket.com  |               |  |  |  |
|                             | Bagnall Cricket Club  |  | <a href="http://www.bagnallcc.com">www.bagnallcc.com</a>                                     |               |  |  |  |
|                             | Ball Hays Green Football Club   |  | <a href="http://www.pitchero.com/clubs/ballhaygreen">www.pitchero.com/clubs/ballhaygreen</a> |               |  |  |  |
|                             | Endon Cricket Club  |  | endon.play-cricket.com   |               |  |  |  |
|                             | Endon Tennis Club   |  | leeksports.co.uk/endontennis   |               |  |  |  |
|                             | Leek Amateur swimming Club  |  | <a href="http://www.leekasc.co.uk">www.leekasc.co.uk</a>                                     |               |  |  |  |
|                             | Leek Archery Club   |  | leekarcheryclub.co.uk  |               |  |  |  |
|                             | Leek Bowling Club   |  | leeksports.co.uk/leekbowling   |               |  |  |  |
|                             | Leek Cricket Club   |  | leekcc.co.uk   |               |  |  |  |
|                             | Leek CSOB Football Club   |  | leekcsob.webs.com  |               |  |  |  |
|                             | Leek Cyclists Club  |  | leekcyclistsclub.co.uk   |               |  |  |  |
|                             | Leek Fencing Club   |  | fourofclubs.weebly.com/leek.html   |               |  |  |  |
|                             | Leek Golf Club  |  | leekgolfclub.co.uk   |               |  |  |  |
|                             | Leek Hockey Club  |  | leekhockeyclub.co.uk   |               |  |  |  |
|                             | Leek Kempo Ju Jitsu   |  | leekkempojujitsu.co.uk   |               |  |  |  |
|                             | Leek Nomads Badminton Club  |  | leeksports.co.uk/nomads  |               |  |  |  |
|                             | Leek Rugby Club   |  | leekrufc.co.uk   |               |  |  |  |
|                             | Leek Shooting Centre  |  | leekshooting.co.uk   |               |  |  |  |
|                             | Leek Tennis Club  |  | clubs.lta.org.uk/LeekTennisClub  |               |  |  |  |
|                             | Leek Town Football Club   |  | <a href="http://www.pitchero.com/clubs/leektown">www.pitchero.com/clubs/leektown</a>         |               |  |  |  |
|                             | North Staffs Junior Football League (Lads and Dads)                                     |  | leeksports.co.uk/football  |               |  |  |  |
|                             | North Staffs Sailing Club   |  | northstaffssailingclub.co.uk   |               |  |  |  |
|                             | North Staffs Shooting Club  |  | northstaffsshootingclub.co.uk  |               |  |  |  |
|                             | North Staffs Rowing Club  |  | nsrc.org.uk  |               |  |  |  |
|                             | Puma/New Century Taekwon-do Club  |  | nctkd.co.uk  |               |  |  |  |
|                             | Rudyard Lake Sailing Club   |  | rudyardlakesc.org.uk   |               |  |  |  |
|                             | Rudyard Lake Sailability  |  | rudyardsailability.co.uk   |               |  |  |  |
|                             | Sheen Tug of War Club   |  | leeksports.co.uk/sheen   |               |  |  |  |
|                             | Staffs Boating Club   |  | <a href="http://www.stokeboatclub.co.uk">www.stokeboatclub.co.uk</a>                         |               |  |  |  |
|                             | Staffs Moorlands Athletics Club   |  | <a href="http://www.staffsmoorlands-ac.co.uk">www.staffsmoorlands-ac.co.uk</a>               |               |  |  |  |
|                             | Tennis  | Thursdays 10am - 12pm  | <a href="http://www.leektennisclub.co.uk">Leek Tennis Club</a>                               |               |  | <a href="http://www.u3asites.org.uk/leek">www.u3asites.org.uk/leek</a>                     |  |
|                             | Waterhouses Tennis Club   |  | leeksports.co.uk/waterhouses   |               |  |  |  |
|                             | Walking Sports - Basketball, Cricket, Football, Hockey, Netball and Rugby for over 50's |  |  |               |  | <a href="https://walkingsports.com">https://walkingsports.com</a>                          |  |

MOORLAND MEDICAL CENTRE LEEK PATIENT PARTICIPATION GROUP

|  |                    |  |                            |  |                 |
|--|--------------------|--|----------------------------|--|-----------------|
|  | Westwood Golf Club |  | westwoodgolfclubleek.co.uk |  |                 |
|  |                    |  |                            |  | kr/ppg/v.3/2022 |
|  |                    |  |                            |  |                 |



January 2026



## What's on Mondays

## What's on Tuesday



peer support

### **Carersfirst Support Group**

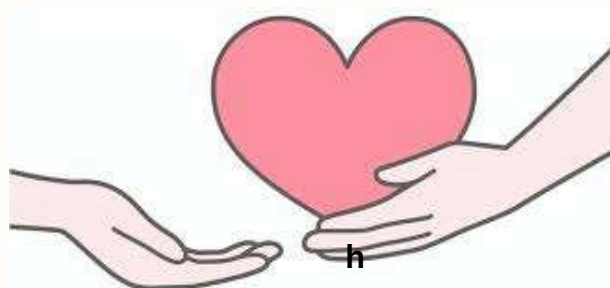
Take time out from your caring role

Come along to our group for emotional, practical and peer support

**Meeting on Monday**  
5<sup>th</sup> & 19<sup>th</sup> January 2026

**The John Marstons**  
**Blurton**  
**ST3 2NQ**

**11.00 am - 1.00 pm**



### **Carers Catch up & Activities**

#### **Biddulph**

Community Zone  
ST8 6NE

**6th January 2026**  
**10am - 11:30am**

### **Carers Support Group**

#### **Kidsgrove**

Kidsgrove Library  
ST7 1BS

**20th January 2026**  
**2.00 pm - 3.30 pm**

### **Carers Catch Up**

#### **Hempstalls Lane**

#### **Newcastle**

**27th January 2026**  
**10.30 am - 12.00pm**  
**Hempstalls Care Home**  
**ST5 9NR**

## What's on Wednesdays

**HAPPY  
NEW  
YEAR!**

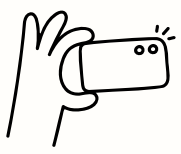
## What's on Thursdays

### Photography Club

Fenton

(Every Wednesday)

10am-12 Noon



Temple St Community Centre  
ST4 4NW

### Brunch @ Olive Tree Cafe

Silverdale

10:30am - 12 Noon

Garners Garden Centre  
ST5 6SH

8th January 2026



### Lifeworks Meeting



14th January 2026

10:30am to 12pm

(For Carers with Autism or Caring  
for someone with Autism)

Harper House, Harper Street,  
Middleport, ST6 3QU

### PEGIS

SEND

### Community Lounge

Fenton

10am- 12 Noon

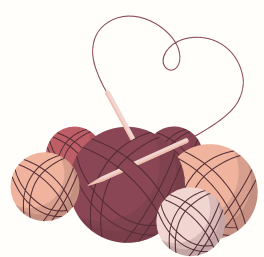
Hazel Trees ST4 3NR

15th January 2026

### Arts & Crafts

Fenton

ST4 4NW



Temple Street Community Centre  
Fenton

10am-12 Noon

Meeting on  
14th & 28<sup>th</sup> January 2026

### CARERS DROP IN

Trent House

Fenton

10.00 am - 11.30 am

15<sup>th</sup> January 2026

Come and have a chat with  
one of our Support Advisors

# What's On Fridays January 2026



## Carers Support Group

Meir

10am-12pm

Meir Primary Care Centre  
ST3 6AB



Meeting on 9th January 2026



## Men Care 2

Join our monthly  
Men's group

Meet new friends & share  
experiences

Meeting at  
The Cafe Fenton, Albert Sq  
Fenton, ST4 3FA

16<sup>th</sup> January 2026  
10.30 am - 12.30 pm

## SHARED MEMORIES DEMENTIA GROUP

Join our NEW monthly group  
for those living with Dementia  
and their Carers

Meet new friends & share  
experiences

Meeting at  
Werrington Library, ST9 0JS

30<sup>th</sup> January 2026  
10.00 am - 12.00 noon



# Out and About at the Community Lounges



**3RD WEDNESDAY  
OF EVERY MONTH**

**St Johns Welcome Centre  
ABBEY HULTON  
ST2 8JW**

**9.00 am - 10.30 am**

**2ND TUESDAY  
OF EVERY MONTH**

**The Hub @ ST6  
Fegg Hayes  
ST6 6QR**

**10.00 am - 12 noon**



**3RD THURSDAY  
OF EVERY MONTH**

**Temple Street Community Centre  
FENTON  
ST4 4NW**

**10.00 am - 12 noon**

Come and speak to one of our Carer Advisors at any of the above venues to find out what support is available

